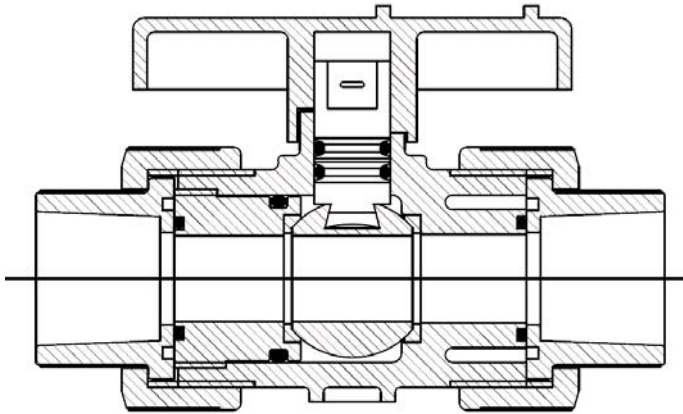


SERIES MBV • 2-Way Manual Ball Valves 3" & 4"

An engineered true union ball valve for manual and actuated valve applications



Each valve is 100% individually inspected and tested prior to shipment.

Features:

- Full port.
- Bi-directional flow.
- Low maintenance and extended operational life.
- Handle equipped as a spanner device to adjust carrier.
- PTFE seat energized by O-ring.
- Ball machined and tumbled to ensure roundness.
- Special mounting pads are molded on body for actuator mounting or valve anchoring.
- Blow-out proof stem.
- Safety shear stem design.
- Double O-ring seal on stem.

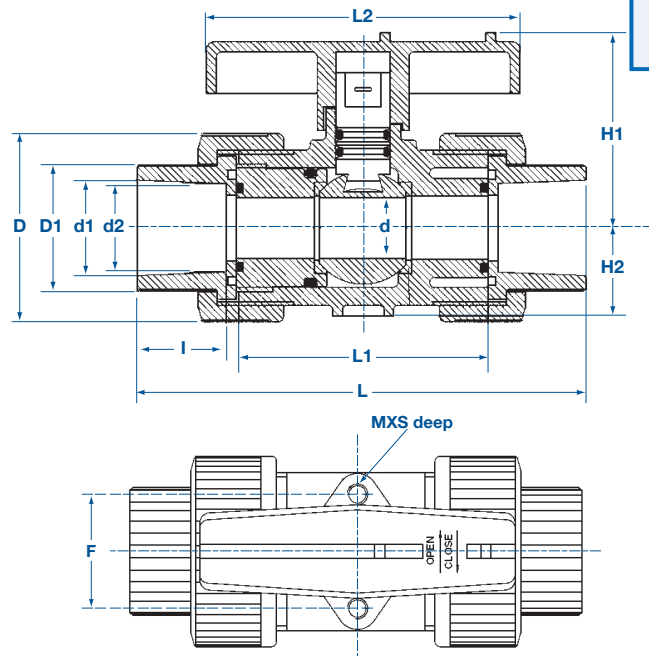
Materials of Construction:

- PVC:** Class 1245B per ASTM D1784\
- CPVC:** Class 1245B per ASTM D1784
- PP:** Class PP 110B76383 per ASTM D4101
- PVDF:** Type 1 per ASTM D3222
- Seals:** EPDM or FKM
- Seats:** PTFE

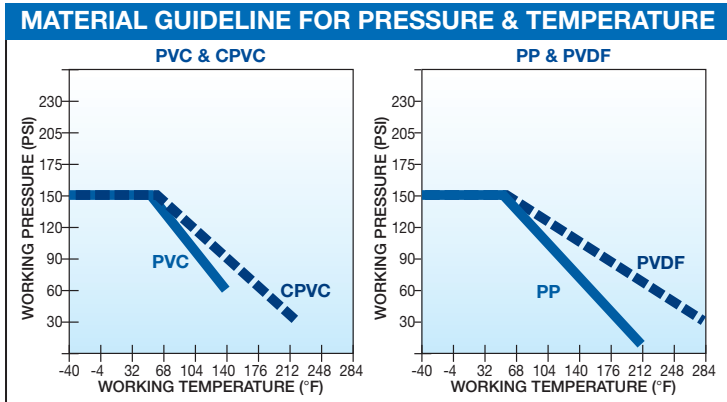
Ordering Information

Order by part number and specify exact chemicals, temperatures and pressures. To arrive at the proper part number, please consult diagram below. The letters and numbers used in this part number are for example only!

MBV	300	X	V	T	-PV
MANUAL BALL VALVE	VALVE PIPE SIZE		SEAL MATERIAL		BODY MATERIAL
	300 3"		V FKM		-PV Polyvinyl Chloride (PVC)
	400 4"		EP EPDM		-CP Chlorinated Polyvinyl Chloride (CPVC)
SPECIAL DESIGNATION			CONNECTIONS		-PP Beige Polypro
When "X" appears in this spot, it designates BSP threads.			S Socket Ends		-PF PVDF
			T Threaded Ends		
			F Flanges*		
VENTED BALL —			*Flanges are not usually needed with true-union ball valves.		
Add "Z-EBV-VENT" for sodium hypochlorite.					



Approximate Flow Rates at 1.0 PSI (0,07 Bar) Pressure Drop		
Valve Sizes	3"	4"
Cv Factor	485	768



DIMENSIONS

Nom. Size	PVC & CPVC						PP & PVDF						d		D		D 1		L		L 1		L 2		H 1			
	IN.	MM	IN.	MM	IN.	MM	IN.	MM	IN.	MM	IN.	MM	IN.	MM	IN.	MM	IN.	MM	IN.	MM	IN.	MM	IN.	MM	IN.	MM		
3"			2.269	57.6	3.516	89.3	3.492	88.7	2.008	51.0	3.555	90.2	3.547	90.0	2.717	69.0	6.299	160.0	4.252	108.0	11.929	303.0	6.220	158.0	8.819	224.0	5.118	130.0
4"			2.250	57.1	4.518	114.7	4.491	114.0	2.402	61.0	4.346	110.2	4.335	110.0	3.898	99.0	8.858	225.0	4.252	108.0	12.835	326.0	6.929	176.0	10.945	278.0	7.008	178.0